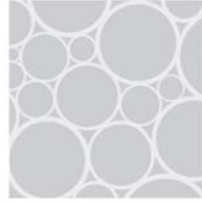




ENVIRONMENTAL



FLOOD RISK



DRAINAGE



ECOLOGY

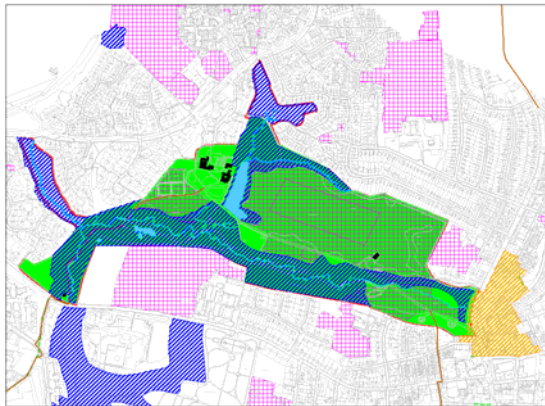
10 Yr Woodland Management Plan

Astley Park, Chorley Borough Council

Project Aims

In 2008 Clear were awarded a prestigious project funded by Chorley Borough Council and The Heritage Lottery Fund. The project was to undertake a 10 year Woodland Management Plan of Astley Park in Chorley, Lancashire.

The first stage of the Management Plan was to



classify the condition of the woodland. This involved a significant survey effort. Clear undertook Tree Surveys, Protected Species Surveys and NVC Surveys on all woodland units within the park.

Based upon the results of these surveys we were able to make recommendations to inform a woodland management plan.

Clear undertook River Corridor Surveys, Great Crested Newt Surveys, Bat Transects, Water Vole



Surveys, NVC Surveys, Tree Surveys, and Breeding Bird Surveys across the park.

Project Summary

The key issues discussed in the management plan were the condition of trees and the associated health and safety risks to the general public who use the park. The park is used by a large proportion of the local population which has had a significant impact on the condition of the woodland in places. In part of the woodland, and most notably in areas of ancient woodland the understorey has been worn away and the ground heavily compacted by human trampling. Measures have been put in place that look to safeguard the quality of the woodland from a health and safety point of view but also for its benefits to biodiversity and the amenity value the woodlands and park serve to the local population.

